



Qingdao Innova Bio-Meditech Co., Ltd.

Add.: No. 176 Jufeng Road, 266199, Qingdao, China

Tel.: +86 532 8789 0634

Email: info@innobiomed.com

Web: www.innovabiomed.com



Benchtop Autoclave & Sterilizer



www.innovabiomed.com

► **About us**



Innova Bio-Meditech is one of the professional solution provider of laboratory and medical devices. Firmly committed to our mission of “sharing innovative bio-meditech solutions with the world”, we are dedicated to innovation in the fields of Biology Project, Life Science, Pharmacy Industry and Medical Treatment.

Innova Bio-Meditech possesses a sound distribution and service network with business partners in North and Latin America, Europe, Africa and Asia-Pacific etc. We have built up a well established R&D, manufacture network with 3 centers in Qingdao, Shanghai and Suzhou. Inspired by the needs of our customers, we adopt advanced technologies and transform them into accessible innovation. This means constant effort and research, in order to more fully understand the developments of the market, INNOVA produce constantly upgraded product ranges by adding new products year after year.

The passion for science

► **Contents**

Production scene1

Touch Screen Vaccum Autoclave (T series).....3

Keyboard Vaccum Autoclave (Classic series).....5

Automatic Vaccum Autoclave (P series).....7

Manual Vaccum Autoclave (X series).....9

Production scene

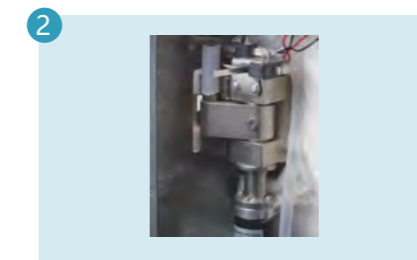
Our company attaches great importance to product quality and fully implements ISO13485 international system of medical devices. We implement strict inspection measures, standardizes assembly process, and strictly controls from design to production. Innova desktop sterilizer has realized safety automatic control.



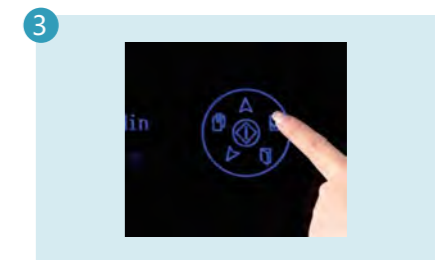
Structural Design



Built-in printer and USB port



Smart sensitive automatic door system



Big size LCD Touch screen control



Wide-open water tank on top, easy to maintain and clean.



Innovative pressure device, double safety protection



Metal Pipe, high temp-tolerated, more reliable and durable.

Touch Screen Vacuum Autoclave (T series)

Application

T series autoclave uses saturated steam for quick and effective disinfection of articles. The device has a compact desktop design. Widely used in dental clinics, eye clinics, laboratories, beauty salons, etc.



Features

- EURO Class B high volume tabletop sterilizers, with 3 pulsating vacuum. Vacuum up to -0.9Bar (-0.09Mpa). Suitable to sterilize wrap, unwrap, solid, porous, hollow device.
- Steel external frame, strong and durable with fashionable appearance.
- Double door locking system, more secure, with auto door system.
- Wide-open water tank on top, easy to maintain and clean.
- Metal pipe connecting the heating paths, more reliable and durable.
- Patent new steam generator, more efficient to get steam and heat.
- Aesthetic and big size LCD touch screen, more user-friendly and practicable for operation.

Features

- EURO Class B high volume tabletop sterilizers, with 3 pulsating vacuum. Vacuum up to -0.9Bar (-0.09Mpa). Suitable to sterilize wrap, unwrap, solid, porous, hollow device.
- Steel external frame, strong and durable with fashionable appearance.
- Auto door locking system, more secure, convenient and users friendly.
- Wide-open water tank on top, easy to maintain and clean .
- Metal pipe connecting the heating paths, more reliable and durable.
- Patent new steam generator, more efficient to get steam and heat .
- Aesthetic and big size LCD touch screen, more user-friendly and practicable for operation.

Technical Specifications

| Model | IA-18T | IA-23T | IA-23TF | IA-29TF |
|--------------------------|------------------|------------------|------------------|------------------|
| Display | LCD Touch Screen | LCD Touch Screen | LCD Touch Screen | LCD Touch Screen |
| Chamber dimensions | 249*355 | 249*450 | 249*450 | 319*623 |
| Chamber volume (L) | 18 | 23 | 23 | 29 |
| External dimension(mm) | 475*610*410 | 475*630*500 | 470*630*500 | 540*580*781 |
| Packing dimension(mm) | 720*545*580 | 720*545*580 | 720*545*580 | 625*650*901 |
| N.W./G.W.(kg) | 66/70 | 65/72 | 65/72 | 76/80 |
| Heating capacity (kw) | 2 | 2 | 2 | 2.5 |
| Sterilization cycle time | 35~60 | 35~60 | 35~60 | 35~60 |
| Water required | Distilled | Distilled | Distilled | Distilled |
| Printer | Y | Y | Y | Y |
| USD port | Y | Y | Y | Y |
| Door lock | Manual | Manual | Automatic | Automatic |
| Certification | CE ISO | CE ISO | CE ISO | CE ISO |



Keyboard Vaccum Autoclave (Classic series)

Application

Classic series autoclave uses saturated steam for quick and effective disinfection of articles. The device has a compact desktop design. Widely used in dental clinics, eye clinics, laboratories, beauty salons, etc.



IA-B



IA-BLCD

Features

- Keyboard controller with LED or LCD display.
- Tabletop compact design.
- Housing, support frame made of powder coated corrosion-resistant high density steel, strong and durable with fashion appearance.
- Comply EU standard Class B, built-in vacuum pump with 3 pulsating vacuum. Vacuum up to -0.9Bar (-0.09Mpa). Residual humidity < 0.2, suitable to sterilize wrap, unwrap, solid, porous, hollow device.
- Fully automatic microprocessor control system, easy operation, rapid response. Multiple sterilization programs.
- Password protection.
- Programmable timer.
- Wide-open water tank on top, easy to maintain and clean, automatic feed water for steam generation.
- Metal pipe connecting the heating paths, more reliable and durable.
- Patent steam generator, more efficient to get steam and heat.
- Air-cooled steam exhaust (IA-45 is water-cooled).
- Built-in printer for batch documentation.

Safety

- With B& D test and vacuum test procedures, to test the penetrability.
- Double lock system to avoid.

Main Component



Spiral steam generator



The chamber is perforated by stainless steel (#304, thickness :2.5mm).



Inlet vacuum pump



Built-in micro printer



CEME valve



ULKA pumps, low noise

Technical Specifications

| Model | IA-12B | IA-16B | IA-18B | IA-23B |
|--------------------------|-------------|-------------|-------------|-------------|
| Display | LED | LED | LED | LED |
| Chamber dimension (mm) | 200*360 | 230*360 | 240*355 | 249*450 |
| Chamber volume (L) | 12 | 16 | 18 | 23 |
| External dimension(mm) | 445*550*395 | 445*550*395 | 445*550*395 | 445*640*395 |
| Packing dimension(mm) | 670*550*500 | 670*550*500 | 670*550*500 | 740*550*500 |
| N.W./G.W.(kg) | 46/51 | 47/52 | 48/53 | 53/59 |
| Heating capacity (kw) | 1.8 | 1.8 | 1.8 | 2 |
| Sterilization cycle time | 35~60 | 35~60 | 35~60 | 35~60 |
| Water required | Distilled | Distilled | Distilled | Distilled |
| Printer | Optional | Optional | Optional | Optional |
| USD port | Optional | Optional | Optional | Optional |
| Door lock | Manual | Manual | Manual | Manual |
| Certification | CE ISO | CE ISO | CE ISO | CE ISO |

| Model | IA-12BLCD | IA-16BLCD | IA-18BLCD | IA-23BLCD |
|--------------------------|-------------|-------------|-------------|-------------|
| Display | LCD | LCD | LCD | LCD |
| Chamber dimension (mm) | 200*360 | 230*360 | 240*355 | 249*450 |
| Chamber volume (L) | 12 | 16 | 18 | 23 |
| External dimension(mm) | 445*550*395 | 445*550*395 | 445*550*395 | 445*640*395 |
| Packing dimension(mm) | 670*550*500 | 670*550*500 | 670*550*500 | 740*550*500 |
| N.W./G.W.(kg) | 46/51 | 47/52 | 48/53 | 53/59 |
| Heating capacity (kw) | 1.8 | 1.8 | 1.8 | 2 |
| Sterilization cycle time | 35~60 | 35~60 | 35~60 | 35~60 |
| Water required | Distilled | Distilled | Distilled | Distilled |
| Printer | Optional | Optional | Optional | Optional |
| USD port | Optional | Optional | Optional | Optional |
| Door lock | Manual | Manual | Manual | Manual |
| Certification | CE ISO | CE ISO | CE ISO | CE ISO |

Automatic Vaccum Autoclave (P series)

Application

P series autoclave uses saturated steam for quick and effective disinfection of articles. The device has a compact desktop design. Widely used in dental clinics, eye clinics, laboratories, beauty salons, etc.



IA-P



IA-PA

Features

- Based on the new B class, three pulsating vacuum, the vacuum degree can reach-900Kpa (- 0.09Mpa), and the residual humidity is less than 0.2.
- Imported advanced 16-bit microprocessor, easy to operate. Suitable for stomatology, ophthalmology, surgery and laboratories.
- Accurate LCD display and advanced self-test system ensure users to freely access working data.
- Double lock door system to ensure safe operation.
- The newly designed water tank is at the top for easy cleaning.
- Optional built-in mini-printer or USB interface to record the disinfection process.

Features

- Automatic electronic lock sterilizer.
- Based on the new Class B, and with three pulsating vacuum.
- The vacuum degree can reach-900Kpa (- 0.09Mpa), and the residual humidity is less than 0.2.
- Suitable for sterilization of packaging, unpacking, solid, porous and hollow equipment.



IA-45P

Features

- **Intelligent operation interface.**
Use TFT screen; intelligent, one-stop interface; sterilization process at a glance; easy to operate!
- **Intelligent water cooling system.**
The pump is water-cooled, with long service life and strong toughness.
- **Electrically controlled automatic door lock system.**
Easy to operate, and can completely eliminate potential safety hazards caused by improper manual operation.

Technical Specifications

| Model | IA-18P | IA-23P | IA-18PA | IA-23PA | IA-29P | IA-45P |
|-------------------------|-------------|-------------|-------------|-------------|------------------|------------------|
| Display | LED | LED | LED | LED | LCD Touch Screen | LCD Touch Screen |
| Chamber dimension (mm) | 249*355 | 249*450 | 249*355 | 249*450 | 319*365 | 319*620 |
| Chamber volume (L) | 18 | 23 | 18 | 23 | 29 | 45 |
| External dimension (mm) | 480*560*420 | 480*630*420 | 480*560*420 | 480*630*420 | 845*605*540 | 845*605*540 |
| Packing dimension (mm) | 675*595*525 | 750*595*525 | 675*595*525 | 750*595*525 | 970*730*660 | 970*730*660 |
| G.W.(kg) | 47 | 50 | 50 | 53 | 110/130 | 113/133 |
| Heating capacity (kw) | 1.8 | 2 | 1.8 | 2 | 3.5 | 3.5 |
| Water required | Distilled | Distilled | Distilled | Distilled | Distilled | Distilled |
| Printer | Optional | Optional | Optional | Optional | Y | Y |
| USD port | Optional | Optional | Optional | Optional | Y | Y |
| Door lock | Manual | Manual | Automatic | Automatic | Automatic | Automatic |
| Certification | CE ISO | CE ISO | CE ISO | CE ISO | CE ISO | CE ISO |

Manual Vaccum Autoclave (X series)

Application

X series autoclave uses saturated steam for quick and effective disinfection of articles. The device has a compact desktop design. Widely used in dental clinics, eye clinics, laboratories, beauty salons, etc.



Features

- Based on the new B class, three pulsating vacuum, the vacuum degree can reach -900Kpa (- 0.09Mpa), and the residual humidity is less than 0.2. Suitable for sterilization of packaging, unpacking, solid, porous and hollow equipment.
- Imported advanced 16-bit microprocessor, easy to operate. Suitable for stomatology, ophthalmology, surgery and laboratories.
- Equipped with B&D test ,vacuum test procedures and test for penetration.
- The chamber adopts 304stainless steel punching, thickness 2.5mm, together with jet steam generator to ensure efficient sterilization.
- Equipped with a waste water tank alarm system to prevent waste water from entering the sterilization cycle to make sterilization thoroughly.
- Accurate LCD display and advanced self-test system ensure users to freely access working data.
- Double lock door system to ensure safe operation.
- The newly designed water tank is at the top for easy cleaning.
- Optional built-in micro-printer or USB interface to record the disinfection process.

Technical Specifications

| Model | IA-18X | IA-23X | IA-18XC | IA-23XC |
|------------------------|-------------|-------------|-------------|-------------|
| Display | LED | LED | LED | LED |
| Chamber dimension (mm) | 249*355 | 249*450 | 249*355 | 249*450 |
| Chamber volume (L) | 18 | 23 | 18 | 23 |
| External dimension(mm) | 475*530*410 | 475*610*410 | 475*530*410 | 475*610*410 |
| Packing dimension(mm) | 675*595*525 | 750*595*525 | 675*595*525 | 750*595*525 |
| G.W.(kg) | 50 | 53 | 50 | 53 |
| Heating capacity (kw) | 1.8 | 2 | 1.8 | 2 |
| Water required | Distilled | Distilled | Distilled | Distilled |
| Printer | Optional | Optional | Optional | Optional |
| USD port | Optional | Optional | Optional | Optional |
| Door lock | Manual | Manual | Manual | Manual |
| Certification | CE ISO | CE ISO | CE ISO | CE ISO |

